

OKLAHOMA DEPARTMENT OF TRANSPORTATION					
FED. ROAD DIST. NO.	STATE	PROJ. NO.	FISCAL YEAR	SHEET NO.	TOTAL SHEETS
6	OKLA.				
DESCRIPTION			REVISIONS	DATE	

L-42-656, N4 CORNER OF SECTION 10, T18N, R4W, I.M., LOGAN COUNTY, OKLAHOMA. SET #4 REBAR WITH PLS 1071 CAP HALF WAY AND ON LINE FROM CORNERS FOUND 0.5 MILES EAST AND WEST OF THIS LOCATION. FILED NEWW CCR FOR THIS CORNER LOCATION.

L-42-655, NWCORNER OF SECTION 10, T18N, R4W, I.M., LOGAN COUNTY, OKLAHOMA. FOUND MAG NAIL IN PLACE PER CCR FILED BY PLS 1505. ACCEPTED THIS CORNER AS IT APPEARS TO FIT O.D.O.T. HIGHWAY PLANS. FILED NEW CCR FOR THIS CORNER LOCATION.

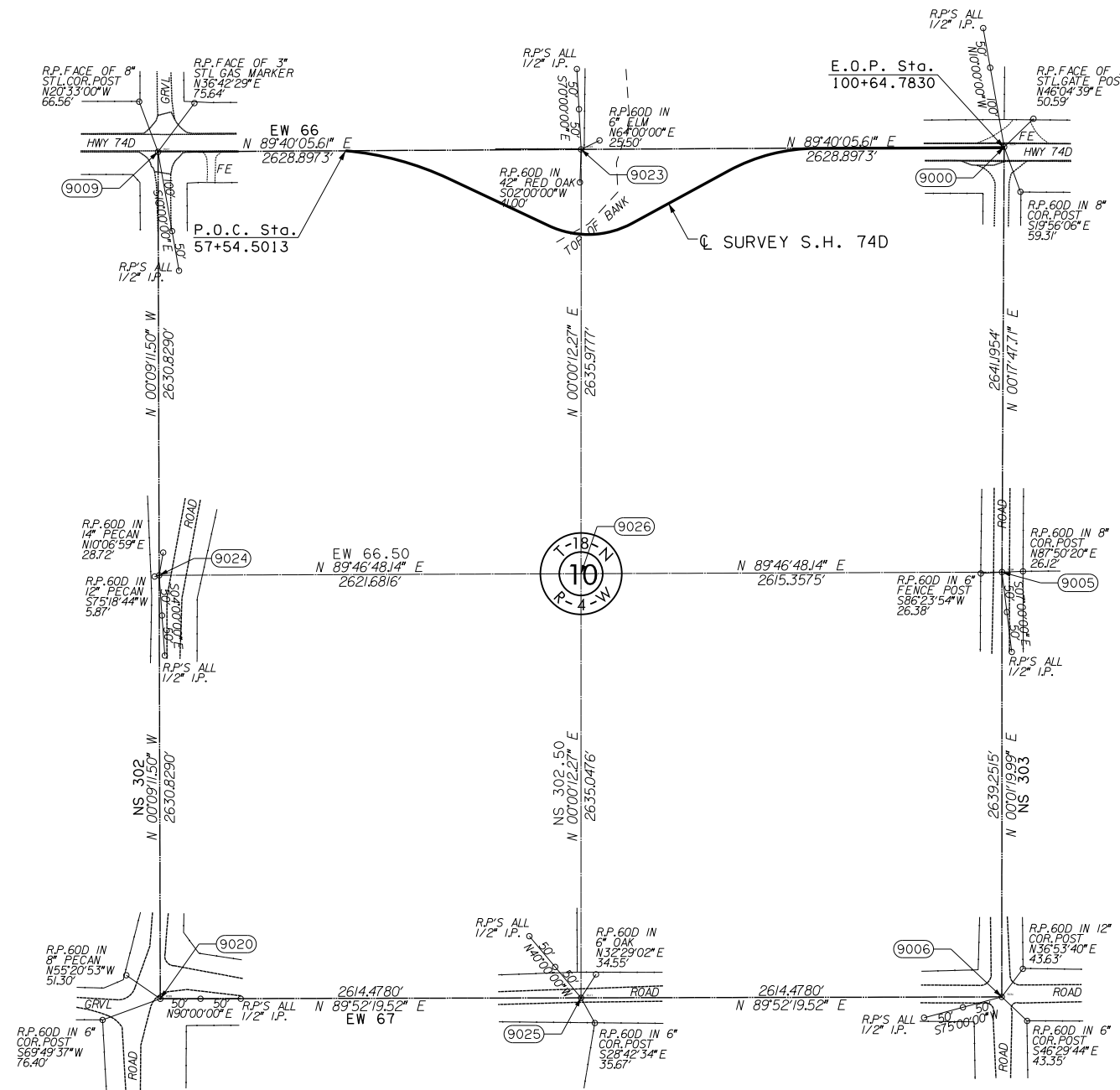
L-42-551, NECORNER OF SECTION 10, T18N, R4W, I.M., LOGAN COUNTY, OKLAHOMA. FOUND #4 REBAR WITH CAP STAMPED C.A. 2054 IN PLACE PER CCR FILED BY PLS 1395. THIS CORNER FITS ODOT PLANS AS WELL AS MONUMENTS FOUND 0.5 MILES NORTH AND SOUTH OF THIS LOCATION. FILED NEW CCR FOR THIS CORNER.

L-42-654, W4 CORNER OF SECTION 10, T18N, R4W, I.M., LOGAN COUNTY, OKLAHOMA. SET #4 REBAR AND PLS 1071 CAP HALF WAY AND ON LINE FROM CORNERS FOUND 0.5 MILE NORTH AND ESTABLISHED 0.5 MILE SOUTH. FILED NEW CCR FOR THIS CORNER LOCATION. ALSO FOUND BENT #4 REBAR IN PLACE PER PLS 1505 3.1 FEET SOUTH AND 18.7 FEET WEST OF OUR CORNER LOCATION.

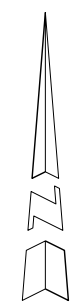
L-42-554, E4 CORNER OF SECTION 10, T18N, R4W, I.M., LOGAN COUNTY, OKLAHOMA. FOUND #4 REBAR WITH CA 2054 CAP IN PLACE PER CCR FILED BY PLS 1395. USED THIS CORNER ON OUR SURVEY AND FILED NEW CCR.

L-42-653, SWCORNER OF SECTION 10, T18N, R4W, I.M., LOGAN COUNTY, OKLAHOMA. SET #4 REBAR WITH PLS 1071 CAP BY D.P.M FROM MONUMENT 0.5 MILE NORTH AND FENCES 0.5 MILE EAST, WEST AND SOUTH. FILED NEW CCR FOR THIS CORNER LOCATION.

L-42-559, SECORNER OF SECTION 10, T18N, R4W, I.M., LOGAN COUNTY, OKLAHOMA. FOUND #4 REBAR IN PLACE WITH ALUMINUM CAP STAMPED JAC. THAT FITS CCR'S FILED BY PLS 1149 & 1395. USED THIS CORNER AND FILED NEW CCR.



L-42-652, S4 CORNER OF SECTION 10, T18N, R4W, I.M., LOGAN COUNTY, OKLAHOMA. SET #4 REBAR WITH PLS 1071 CAP HALF WAY AND ON LINE FROM CORNER FOUND 0.5 MILE EAST AND SECTION CORNER ESTABLISHED 0.5 MILE WEST. FILED NEW CCR FOR THIS CORNER LOCATION.



SCALE:
1" = 50'

OKLAHOMA DEPARTMENT OF TRANSPORTATION					
SURVEY DIVISION					
SURVEY DATA SHEET					
PLS	JLC				
DRAWN	BJC				
CHECKED	JLC				
APPROVED	JLC				
CREW	CARROLL	SWO 4938 (1)	STATE JOB NO. 28312(04)	SHEET NO. 509	